



2024/25

map

THE SYSTEM
BROCHURE

Map the System Brochure

Table of Contents

04
WELCOME

05
WHY MAP THE SYSTEM

06
HOW IT WORKS

08
GET INVOLVED

09
THE LEARNING PROGRAMME

13
THE GLOBAL FINAL COMPETITION

16
JOIN AS A PARTNER



Welcome to Map the System

Empowering a new generation of systems thinkers

Map the System is a learning programme and global competition that nurtures a global community of educators, students, and practitioners committed to applying the principles of systems thinking to complex social and environmental challenges.

The Skoll Centre partners with universities worldwide each year, supporting educators to deliver the Map the System programme at their institutions before inviting top student teams from all over the world to convene for a final competition in Oxford.

"It is a very hard thing to turn off once you learn how to think in systems. Map the System has influenced everything that I do. I never look at something in an isolated way anymore and I always try to understand why something might be the way that it is."

Roisin Dillon, 2018 Map the System winner



Why Map the System?

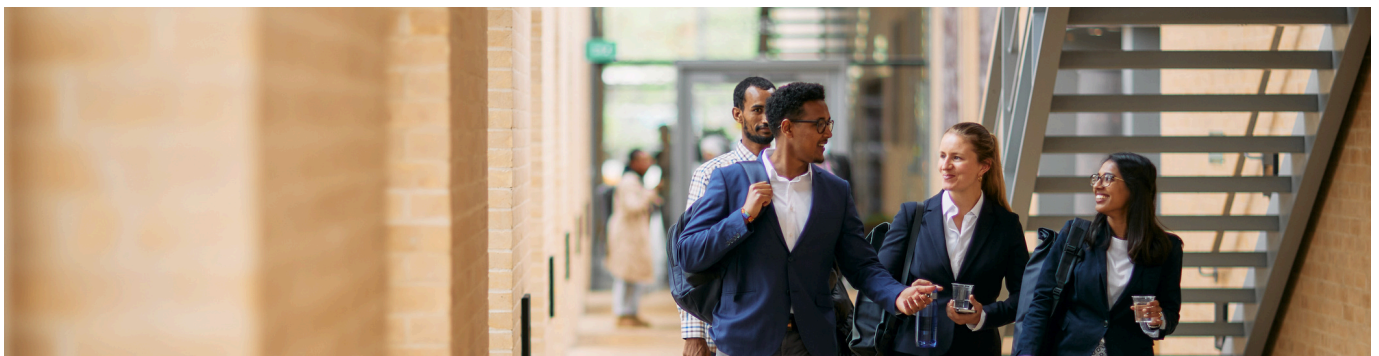
Empowering a new generation

Systemic global problems won't be solved by a lone genius. To confront the complex societal and environmental issues young people have inherited, we must invest in a new kind of leader. Systems leaders catalyse social change by empowering others and prioritise a deep understanding of the unjust systems they are trying to dismantle. It is crucial that systems leadership education reaches as many young people as possible, so that future systems leaders have the diversity of perspectives needed to tackle the complex global problems of tomorrow.

Map the System is transforming the way we teach problem solving within higher education and is equipping a new generation of leaders with the systems thinking mindset needed to re-shape our world.

Map the System is delivered through partnerships with Higher Education institutions around the world. Our educator partners are deeply committed to enhancing social impact education at their local institutions.

- **Join a global movement** which values understanding problems first, before proposing solutions. We believe this is the future of social impact education.
- **Build global connections** with staff, faculty, and students from institutions across the globe – all of whom are passionate about social change.
- **Create meaningful opportunities for students** by winning cash prizes, making valuable connections, and developing their ideas for impact.



How it works

Each year, universities and post-secondary institutions from around the world partner with the Skoll Centre for Social Entrepreneurship at the Saïd Business School, University of Oxford to bring the Map the System to their students for a local edition of the competition.

With dedicated support from the Skoll Centre team, educators (faculty or staff) from partner institutions lead the organisation and delivery of Map the System on their campus.

Institutions can choose to offer the competition to students either campus-wide or department specific and can also choose to incorporate Map the System into their for-credit curriculum or run it as an extracurricular programme.

Affiliated students from all disciplines and levels can register to take part individually or as part of a team of up to 5 members and spend the next several months diving deep into a social or environmental topic they are passionate about.

Participants learn and utilise the principles of systems thinking as a guiding approach to understanding a complex social or environmental challenge and create visual systems maps as a means to articulate their findings in a way that people can meaningfully understand, share, and learn from – key skillsets for those interested in creating systemic and sustainable social or environmental change.





Partnership

Register as a partner institution to participate in Map the System.

1

Delivery

Choose how Map the System fits your campus: for-credit or extracurricular, across campus or within departments.

2

Resources

Access online modules, guidance, and virtual gatherings to support students' growth as systems thinkers.

3

Competition

Lead a campus-wide competition with Skoll Centre support to prepare students for the global competition.

4

Final Competition

Send a student team and educator to compete in the annual global event in Oxford at the Saïd Business School.

5

Get involved

1. Partner with us

Register as a partner institution to take part in Map the System.

2. Devise the right delivery model

Determine whether to offer the Map the System to students campus-wide or to limit participation to a specific department or programme, and choose whether to incorporate Map the System into a for-credit curriculum or run it as an extracurricular programme.

3. Leverage MTS educator resources

To empower students to develop as systems thinkers and prepare their MTS projects, the Skoll Centre has developed an online learning programme consisting of six self-paced modules. Additionally, educators are provided carefully designed guidance documents, can access additional learning materials, and attend virtual educator gatherings.

4. Hold a local competition

With Skoll Centre support, educators organise a local campus competition. Students, individually or in teams of up to five, spend the next several months applying the principles of systems thinking to dive deep into a social or environmental topic they are passionate about. They submit visual, oral, and written materials, and each institution selects a top team to advance to the global Map the System competition in Oxford.

5. Attend the global final competition

Each institution can send one student team and one educator to the global competition held annually in Oxford at the Saïd Business School. The global competition is a 4-day convening where top student teams from all over the world will come together to share and celebrate their research, compete for prizes, participate in workshops, and learn from world-class systems thinking practitioners.

The learning programme

To support educators in empowering their students to think differently about social and environmental change and how to apply a systems thinking approach, the Skoll Centre has developed the Map the System learning programme.

The programme serves as a primer for students who go on to submit a project for a Map the System competition at their institution. The learning programme is fully asynchronous and consists of six online modules, each consisting of approximately two hours of learning content.

Learning outcomes

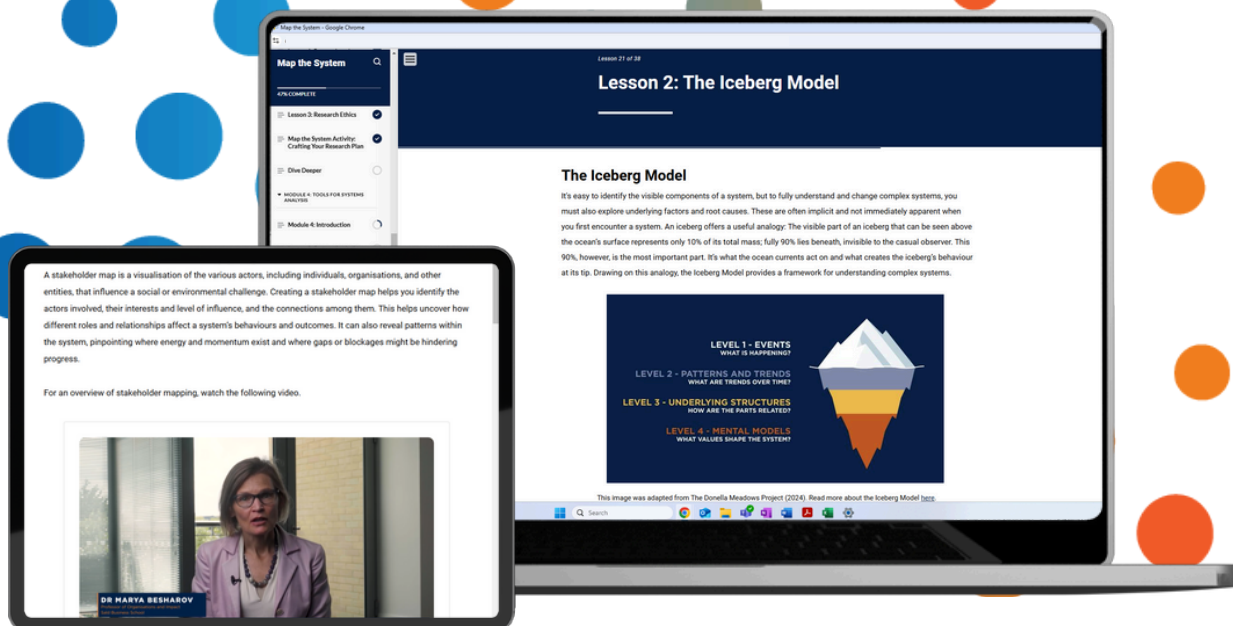
Upon completion of the MTS learning programme, participants will be able to:

- 1.** Identify, analyse, and communicate factors that sustain an existing complex system, thereby perpetuating a complex social problem.
- 2.** Integrate and apply different ways of learning, incorporating contributions from various disciplines and recognising the value of lived experience, to understand and analyse a complex social problem.
- 3.** Critically evaluate and apply the most effective analytical tools, either individually or in combination, to address a complex social problem.
- 4.** Evaluate attempts and/or existing interventions to address a complex social problem.
- 5.** Recommend and communicate new approaches to disrupt a broken system and address a complex social problem.

Learning programme overview

MODULE	FOCUS	LEARNING OBJECTIVES	MTS ACTIVITY
Module 1	Understanding complex social problems	<ul style="list-style-type: none"> • Adopt a beginner's mindset to approach a social or environmental challenge • Identify the difference between simple and complex problems 	Identify a social or environmental challenge you are passionate about exploring more deeply.
Module 2	Adopting a systems approach	<ul style="list-style-type: none"> • Identify the main components of a complex system • Apply the Six Conditions Framework to identify the factors that sustain an existing complex system as well as ways that those factors could shift the system • Establish boundaries of a complex system to make it tractable for analysis 	Consider and bound your chosen challenge as a complex system.
Module 3	Methods for learning about systems	<ul style="list-style-type: none"> • Plan an appropriate and feasible approach to researching your chosen social or environmental challenge • Understand the distinction between secondary research, primary research, and research based on lived experience, as well as the value of each approach • Apply ethical principles to data collection 	Plan an approach to researching your chosen challenge.
Module 4	Tools for systems analysis	<ul style="list-style-type: none"> • Understand and follow appropriate principles and guidelines for systems analysis • Identify a range of possible tools and frameworks for analysing systems • Analyse a complex system using the Iceberg Model 	Use the Iceberg Model to analyse the system underpinning your chosen challenge.

MODULE	FOCUS	LEARNING OBJECTIVES	MTS ACTIVITY
Module 5	Tools for systems mapping	<ul style="list-style-type: none"> Identify and map key stakeholders in a complex system Map feedback loops in a complex system Determine which systems mapping tools will best help you contextualise and communicate the dynamics of your chosen social or environmental challenge 	Produce a stakeholder map and causal loop diagram for the system underpinning your chosen challenge.
Module 6	Moving from analysis to action	<ul style="list-style-type: none"> Describe the characteristics of an intervention Explain how small changes can cause significant shifts in a system Identify the use of leverage points and workarounds within a complex system 	Analyse existing interventions and leverage points for addressing your challenge.





The global final competition



The Map the System global final competition will take place 3rd July – 6th July 2025 at the Saïd Business School, University of Oxford, UK. Each partner institution can send one student team and one educator to participate in this event.

The global final competition will be an immersive learning experience for students and educators to come together to share and celebrate their research, compete for prizes, participate in workshops, learn from world-class systems thinking practitioners, and engage in networking opportunities.

Each student team will have the opportunity to deliver a 10-minute presentation on their systems analysis to a panel of judges. The presentation will be followed by a 10-minute Q&A with the judges. The purpose of each presentation is to highlight the key insights and learnings from the students' analysis of their chosen system.

Competition Prizes

The following cash prizes are awarded to the top 3 teams at the global final competition:

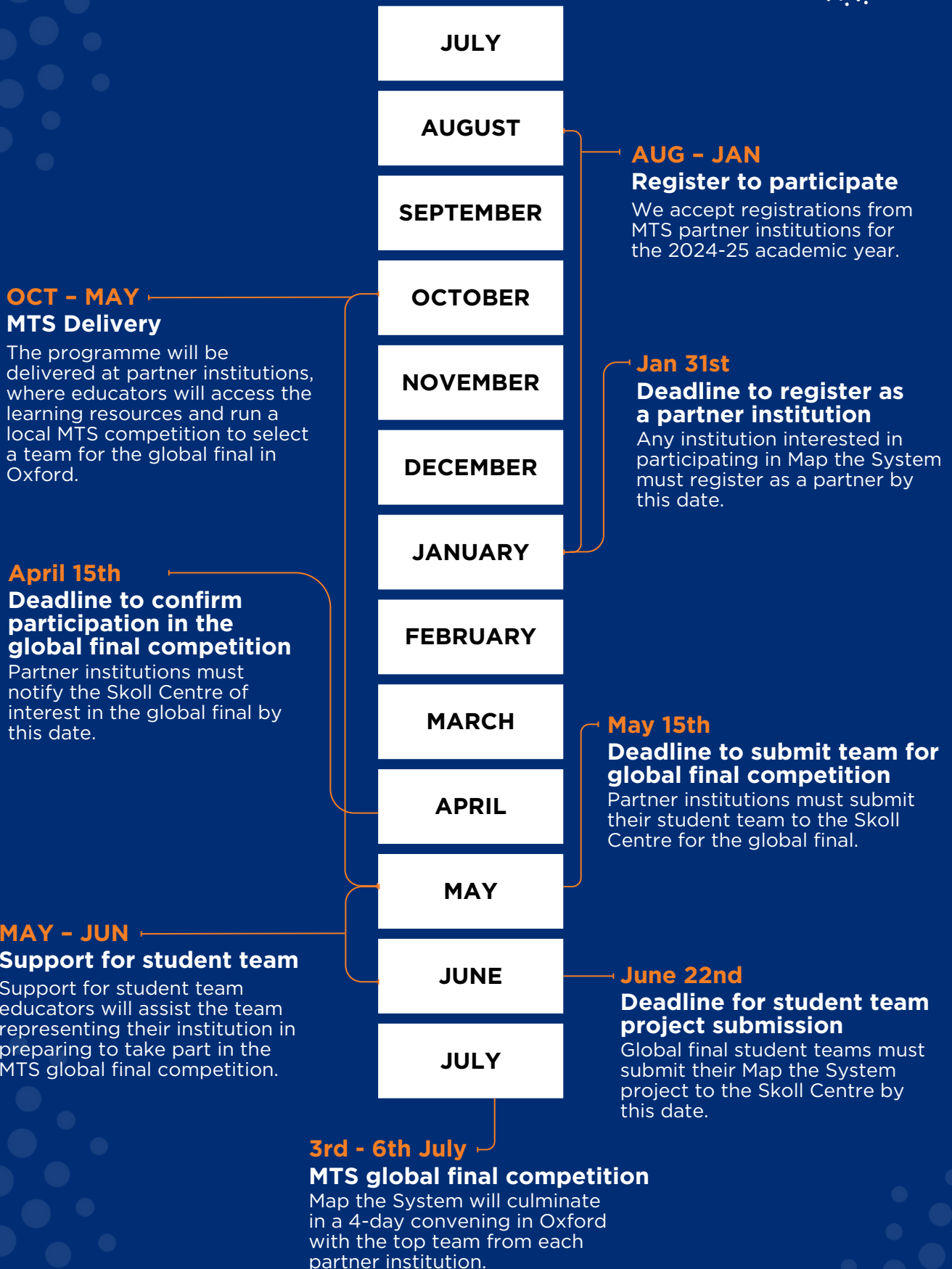
- 1st Prize – £5,000 cash prize
- 2nd Prize – £4,000 cash prize
- 3rd Prize – £3,500 cash prize

In addition to cash prizes, a number of excellence awards will be awarded to participating teams.

Logistics

Planning costs, catering, activities, and workshops are covered by the Skoll Centre. Accommodation and travel costs must be funded by your institution. A block of subsidised dormitory-style rooms in University of Oxford colleges will be made available. A modest access fund is available to support travel and accommodation costs. Students must apply individually, with applications reviewed on a case-by-case basis.



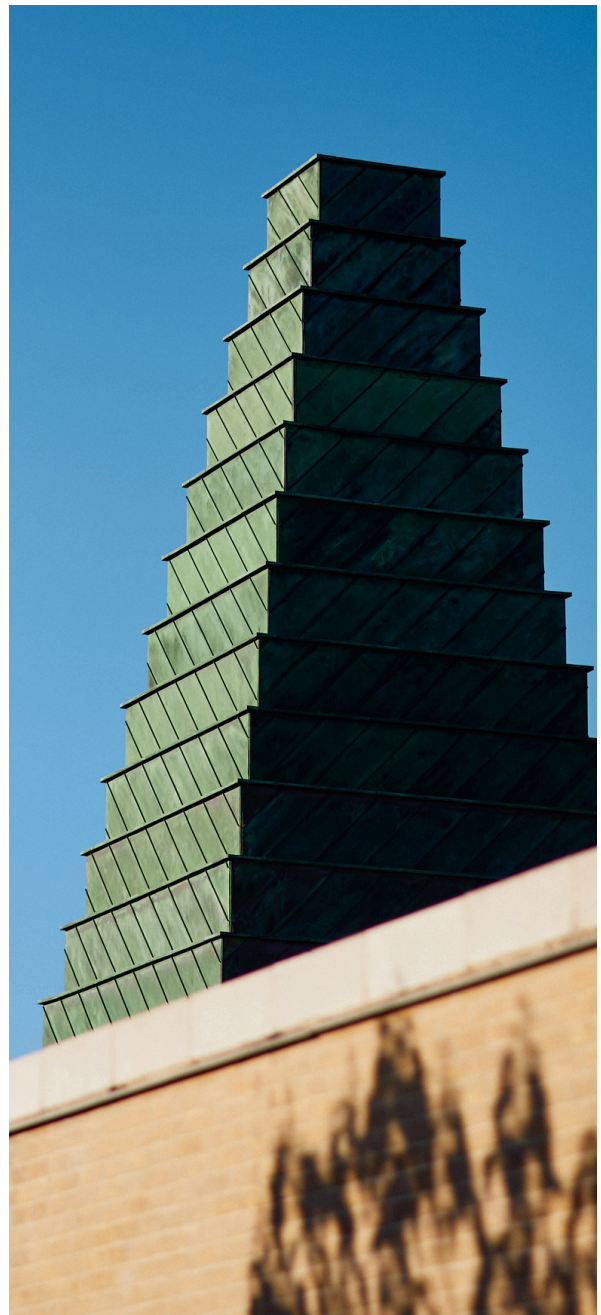


Join as a partner

We seek to continue to find new partnerships with higher education institutions around the world. Below we have listed the current eligibility criteria if your institution seeks to join as a partner.

Institution eligibility

- Institutions must be considered a higher educational institution (e.g. universities, vocational universities, community colleges, liberal arts colleges, institutes of technology and other collegiate level institutions, such as vocational schools, trade schools and career colleges, that award academic degrees or professional certifications).
- Institutions must have internal capacity to support students throughout the cycle of the Map the System Programme



Why register as a partner?

The Skoll Centre will provide each partner institution with:

- The opportunity for one student team and one educator to attend the global final competition.
- Access to the Map the System learning programme for staff and students.
- A series of online webinars and virtual networking for educators around the globe to gather new ideas, answer questions, and share resources.
- Carefully designed guidance documents, supplemental learning materials, and individualised support from the Skoll Centre team.
- An educator's guide for running a local competition at your institution to select a team to attend the global competition.
- A communications toolkit for promoting the MTS competition at your institution, including digital assets, posters, and flyers.
- Support ahead of the global competition to address key details for attending teams and educators.
- Access to the Kumu systems-mapping software tool.



Why bring Map the System to your campus?

Map the System is a unique learning opportunity for students and educators interested in social or environmental systems change. Over the years, Map the System has proven to:

- Encourage participants' interest in becoming agents of change around social and environmental issues that they care about.
- Provide new mindsets and tools with which to become more effective change agents; maximising positive impacts and minimising negative impacts.
- Deepen understanding in participants' chosen topics in ways that may lead to future impact.
- Generate exposure to the systems mindset, improving participants' analytical and communications capacity as citizens and ability to operate in increasingly complex professional and workplace contexts.
- Opportunity for your students to build sought-after employability skills to support them in further studies and future employment. Systems thinking skills can be applied to any context and our graduates continue to use them.
- Increase global visibility for your team and university as a partner of the Skoll Centre, and, by association, the University of Oxford.



Registration fee

The Skoll Centre is a non-endowed, externally-funded centre based at the University of Oxford. Your partnership contribution directly supports the costs of running Map the System, including the design and delivery of the learning programme, educator supports and resources, and the global final competition.

The following pricing options are available to partner institutions:

Participate in the learning programme and global competition: **£4,000**

Access only the learning programme: **£3,500**

Registration process

Map the System is a global community of educators, students, and practitioners. Complete our registration form online to join us and confirm your institution's participation.

The registration fee is not required upon registration. During the registration process you will have to agree to paying the registration fee or request to apply for a fee reduction. There is a modest access fund available to support costs for institutions where the cost is a barrier to participation. These requests are reviewed on a case-by-case basis.

REGISTER NOW



Contact us

Map the System is an initiative of the Skoll Centre for Social Entrepreneurship at Saïd Business School, University of Oxford.

If you have any questions, contact a member of our team:



Lina Papandreou

**Impact Education Coordinator,
Global Programmes**

mapthesystem@sbs.ox.ac.uk



Nick Gregg

**Senior Manager,
Impact Education**

mapthesystem@sbs.ox.ac.uk



Saïd Business School
University of Oxford
Park End Street
Oxford, OX1 1HP
United Kingdom

skollcentre.org